

P H I L E X P O
W O O D 2 0 1 9

RUBNER
holzbau

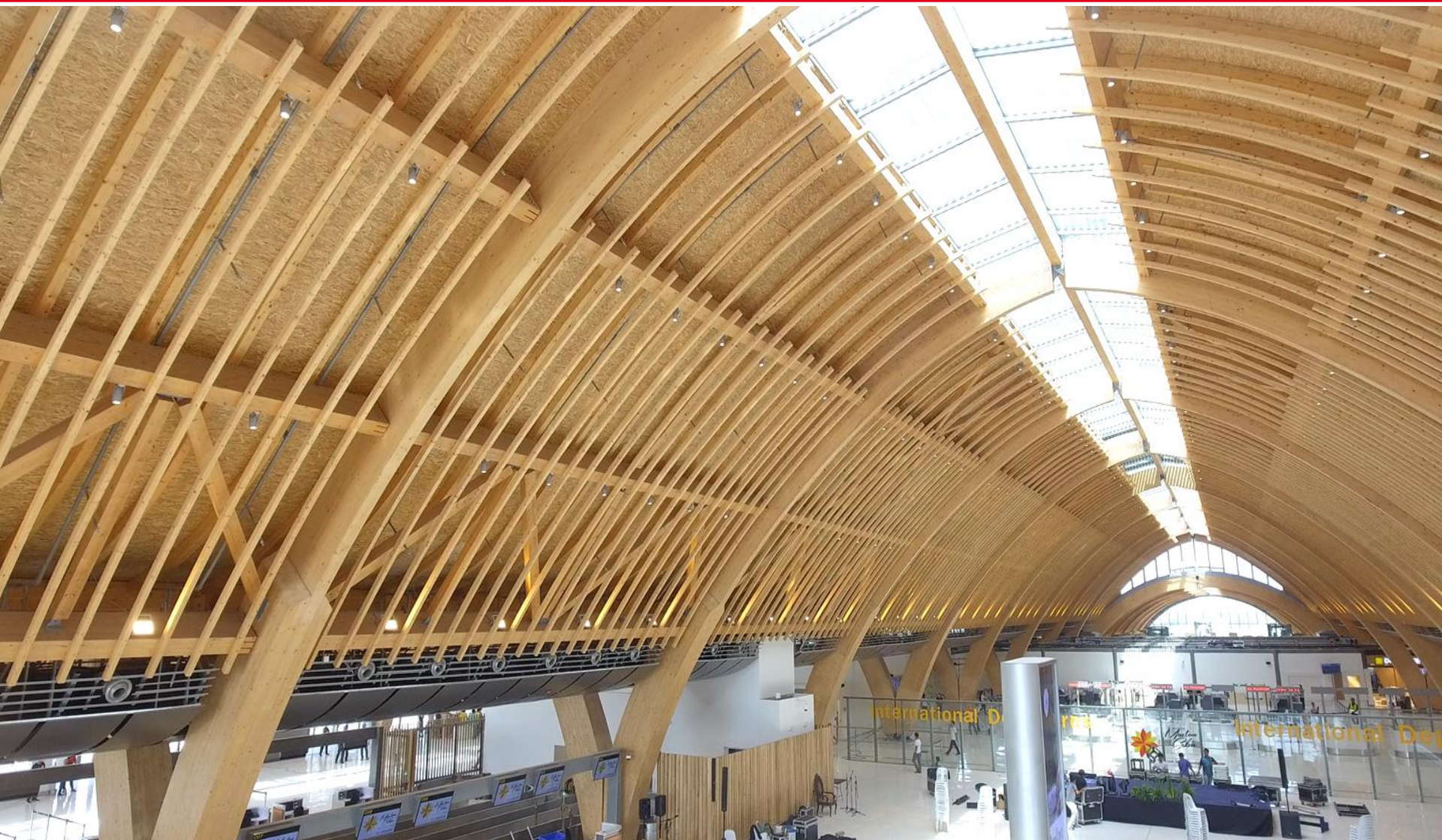


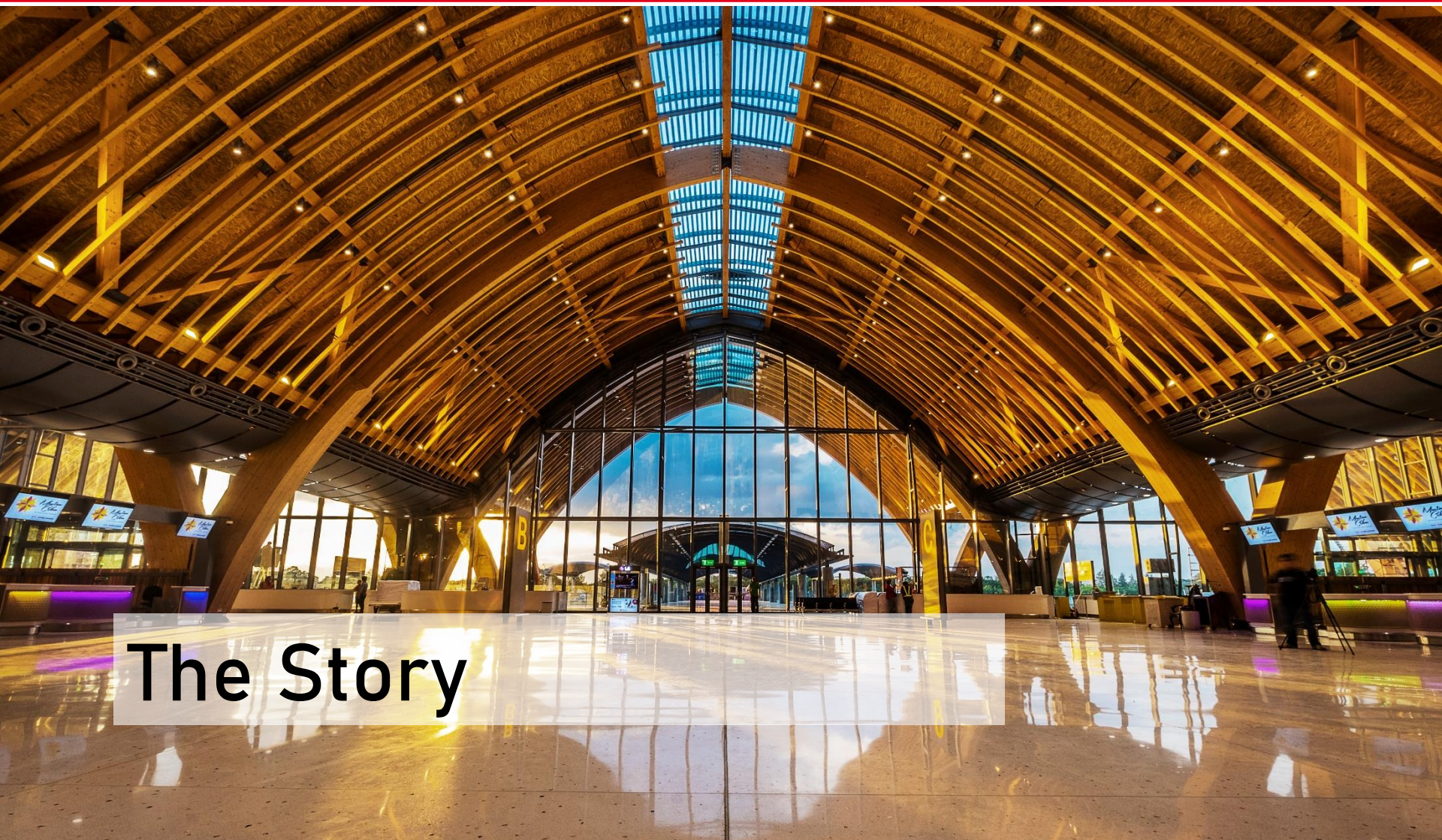
*Mactan
Cebu*

INTERNATIONAL AIRPORT

P H I L E X P O
W O O D 2 0 1 9

RUBNER
holzbau





The Story

1956



The United States Air Force built an airfield that would serve as an emergency landing strip for US bombers called **the Mactan Air Base.**

P H I L E X P O
W O O D 2 0 1 9

RUBNER
holzbau

GAR

MEGAWIDE





Mactan Cebu

INTERNATIONAL AIRPORT

GAR **MEGAWIDE**
CEBU AIRPORT CORPORATION



MEGAWIDE



RUBNER
holzbau



The Idea

P H I L E X P O
W O O D 2 0 1 9

RUBNER
holzbau

Start here





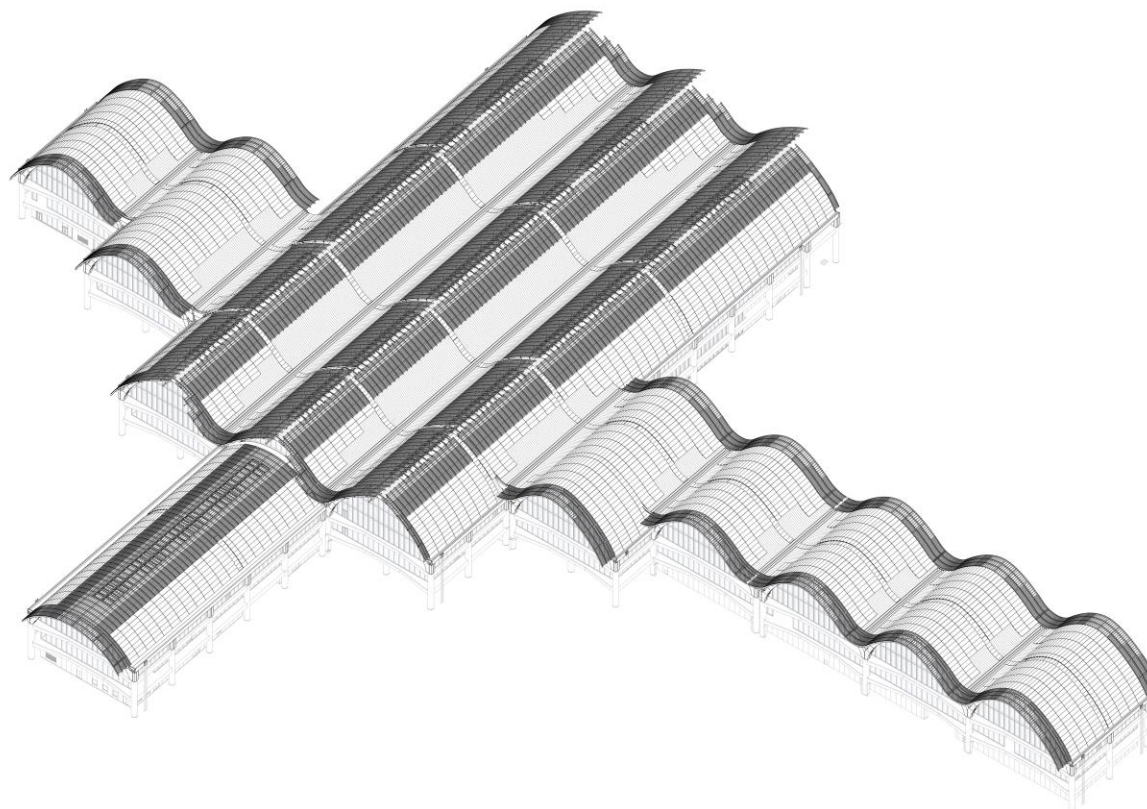
- The worlds friendliest airport
- An Airport that feels like a resort. Or a resort that has an airport.

P H I L E X P O
W O O D 2 0 1 9

RUBNER
holzbau



A0



GRANTORS:

Department of Transportation
and Communications

Mactan-Cebu International Airport
Authority,
Republic of the Philippines

PROJECT:

**MACTAN CEBU INTERNATIONAL
AIRPORT PROJECT**

CONCESSIONAIRE:

GMR Megawide
Cebu Airport Corporation



CONTRACTOR:

MGCJV
LABORATOR - BIRPL - CONSTRUCTION GROUP VENTURE

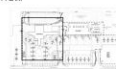
PROJECT ARCHITECT:

IDA INTEGRATED DESIGN ASSOCIATES LTD.
IDA INCORPORATED
1101 BAYVIEW DRIVE
SUITE 1000
MAYAGODA, PHILIPPINES
Tel: 632 888 8888

STRUCTURAL DESIGN CONSULTANT:

ARUP One Arup & Partners Building, King Larkin
Singapore 048623
Tel: 65 6336 8888

KEY PLAN:



NO.	DATE	DESCRIPTION	BY	CHECKED
1.	2018.08.14	ISSUED FOR PERMIT SUBMISSION	MS	MS

DESIGN PHASE:
**DETAIL DESIGN
ROOF SHEETING PACKAGE (71)**

SIGNATURE FOR APPROVAL:

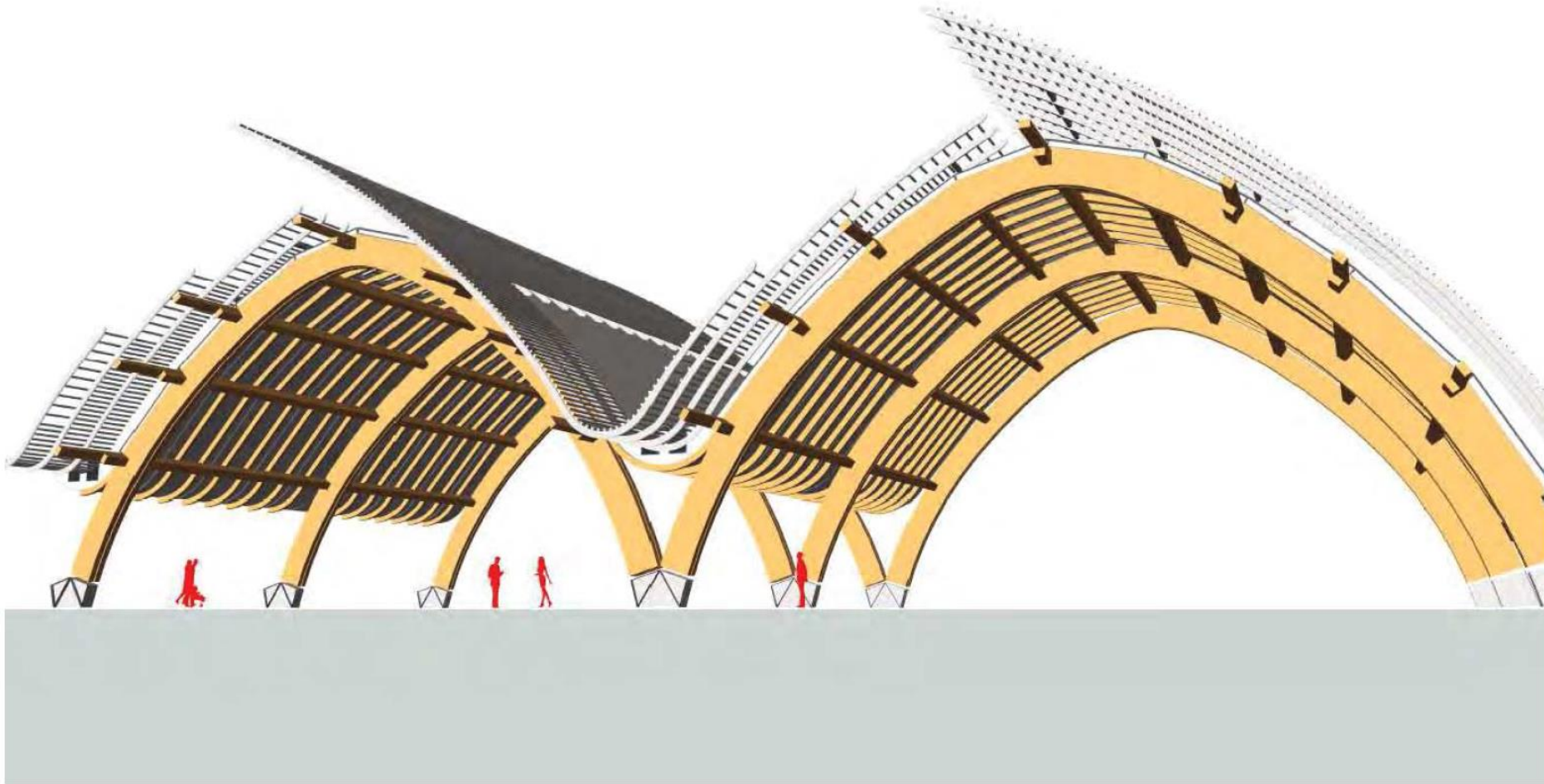
NO.	DATE	DESCRIPTION	BY	CHECKED
1.	2018.08.14	ISSUED FOR PERMIT SUBMISSION	MS	MS

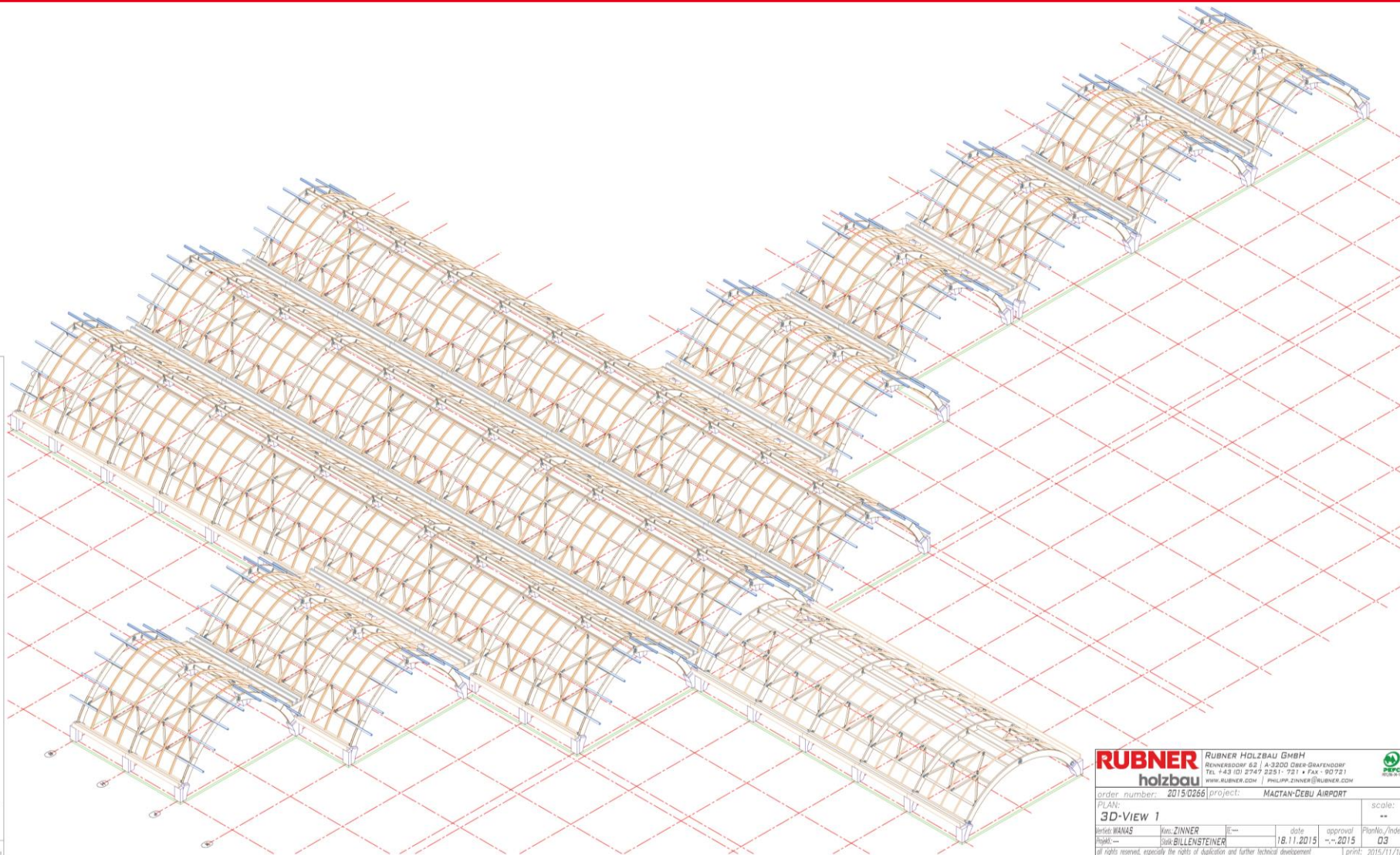
DRAWING TITLE:
**TERMINAL 2 (PHASE 1)
COVER PAGE OF ROOF SHEETING
PACKAGE**

SCALE: @A0

DRAWING NUMBER: **GMCA-CMCA-D-IDA-A-71-0-000** REVISION: **A**

USER: INTEGRATED DESIGN ASSOCIATES LTD.

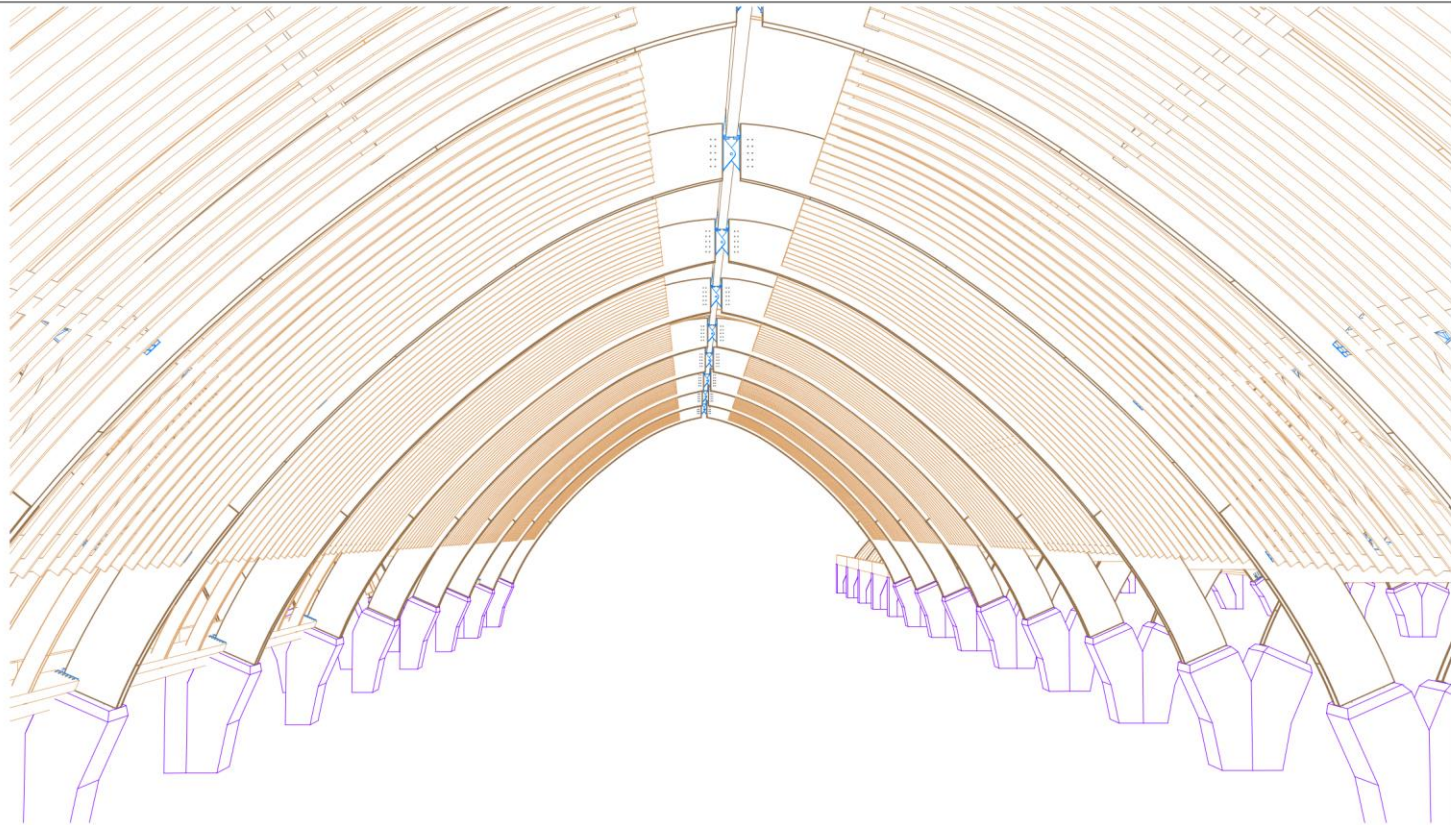




© 2015 Rubner Holzbaufabrik GmbH, Dornbirn, Austria. 18. November 2015, 12:25:55

A1

RUBNER holzbau		RUBNER HOLZBAU GMBH RENNERSDORF 62 A-3200 OBER-GRAFENSDORF TEL. +43 (0) 2747 2251-721 FAX + 90 721 WWW.RUBNER.COM PHILIPP.ZINNER@RUBNER.COM			
order number: 2015/0266		project: MACTAN-CEBU AIRPORT		scale: --	
PLAN: 3D-VIEW 1					
series: WIAS	Max. ZINNER	date: 18.11.2015	approval: --, 2015	PlanNo./Index: 03	
Project: --		Gisela-BILLENSTEINER		print: 2015/11/18	
all rights reserved, especially the rights of duplication and further technical development					



D:\VB-Projekt\Vertrieb\Kernst\Wanast-Cebu (Philippin)\Gemeinsam.dwg
 2016/01/12 10:46:17

A3
297420

RUBNER
holzbau

RUBNER HOLZBAU GMBH
 RENNERSDORF 62 | A-3200 OBER-GRAFENDORF
 TEL +43 (0) 2747 2251- 721 • FAX - 90721
 WWW.RUBNER.COM | PHILIPP.ZINNER@RUBNER.COM



order number: 2015/0266 | project: MACTAN-CEBU AIRPORT

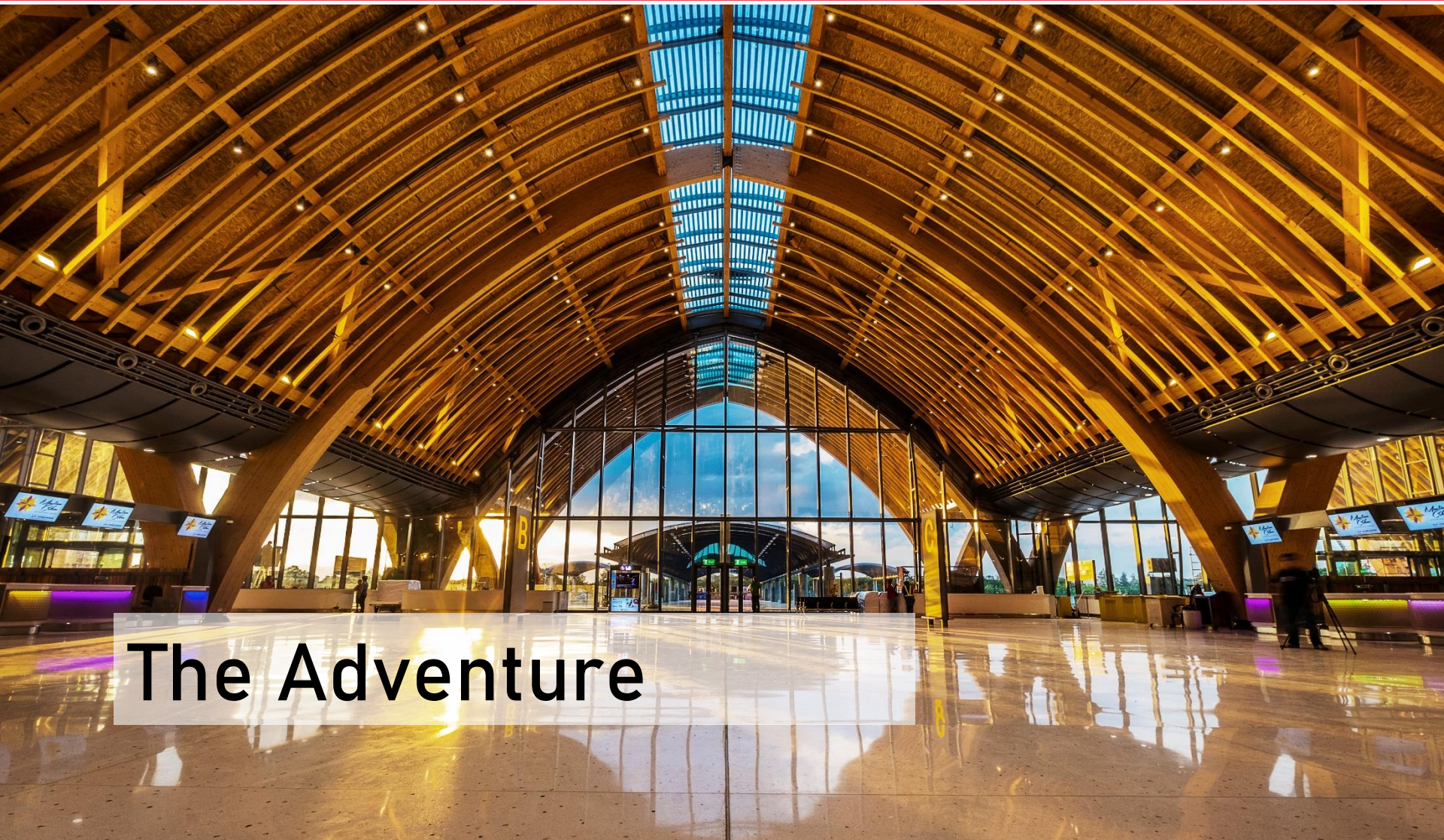
PLAN:
3D-VIEW WITH ADDITIONAL TIMBER STRIPS

scale:
OM

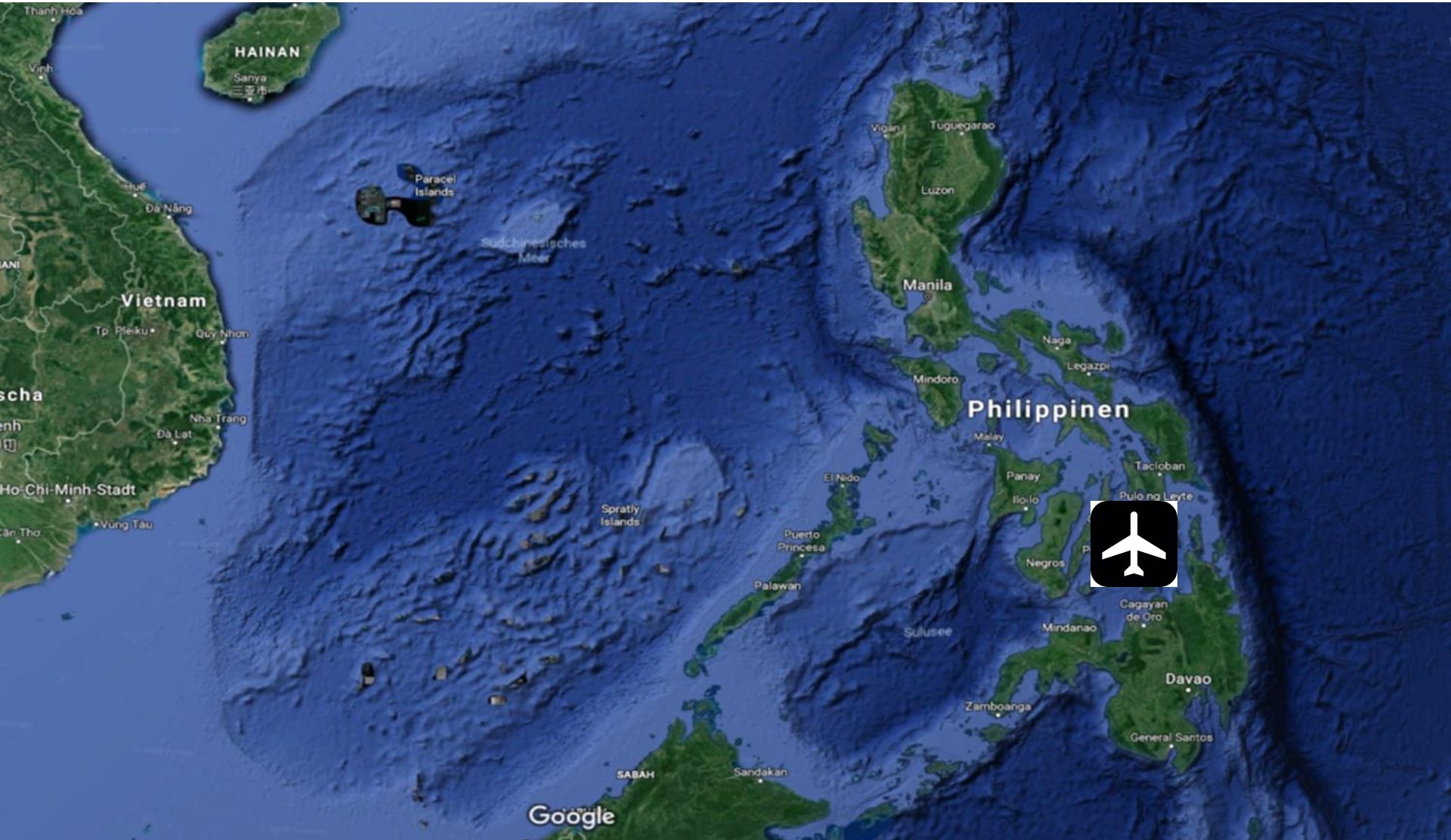
Vertrieb: WANAS	Kons.: ZINNER	VE: ---	date	approval	PlanNo./Index
Projektl.: ---	Statik: BILLENSTEINER		12.01.2016	---.2015	12

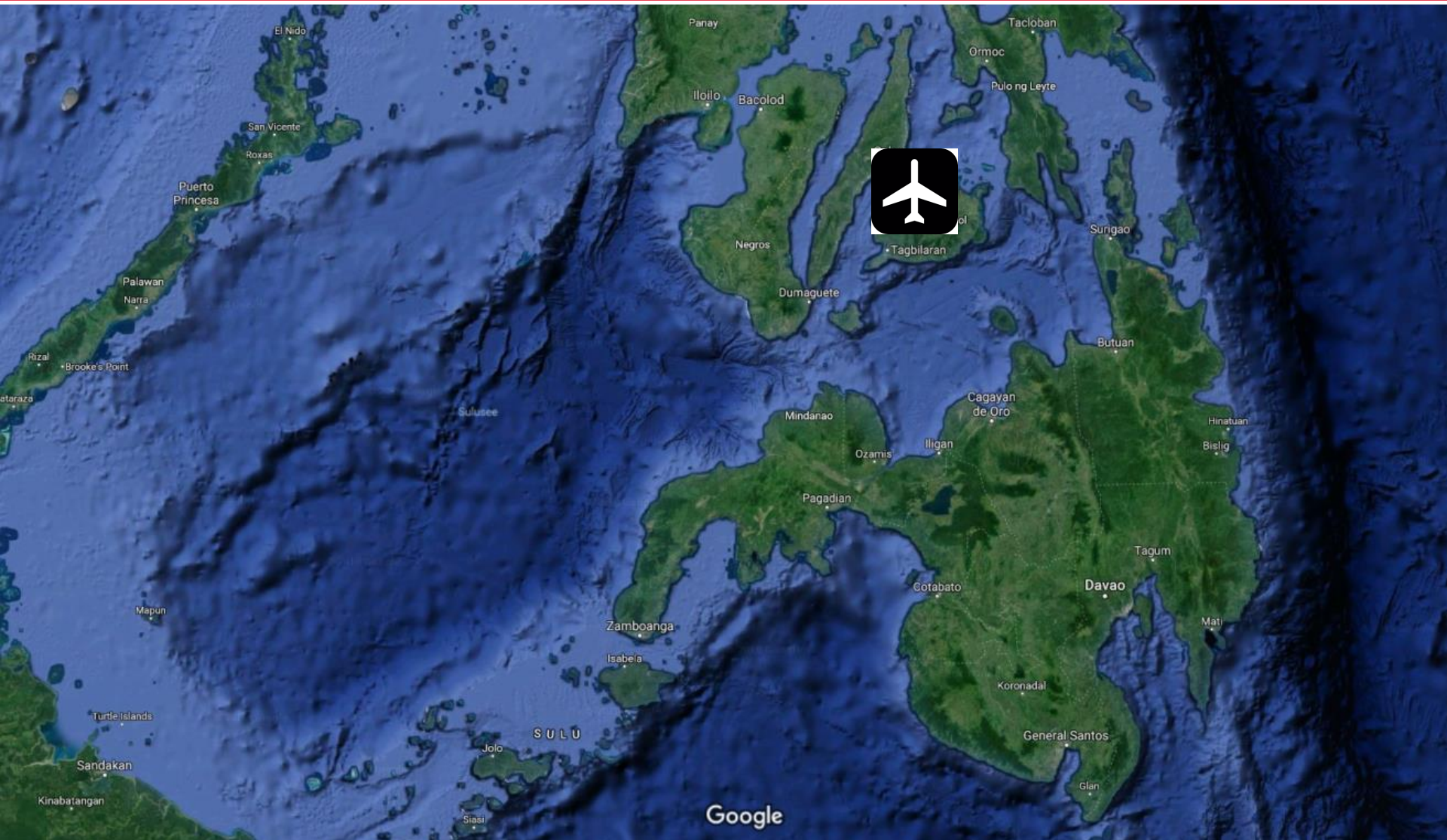
all rights reserved, especially the rights of duplication and further technical development

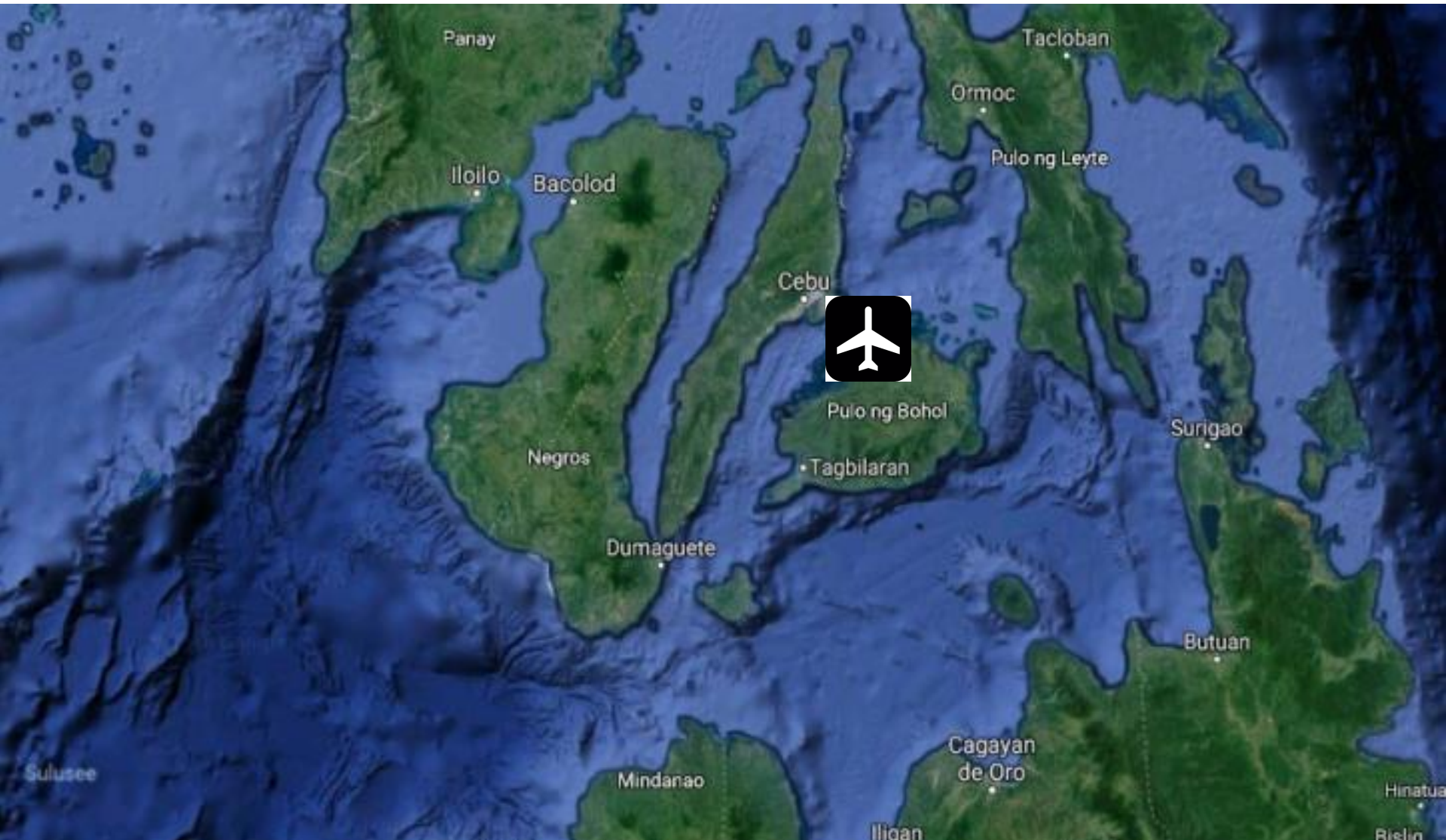
print: 2016/01/12



The Adventure





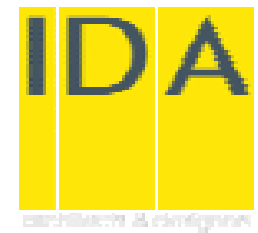
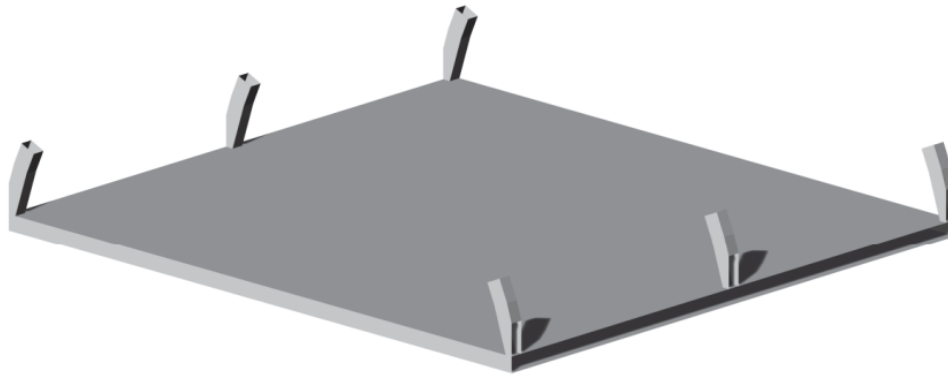






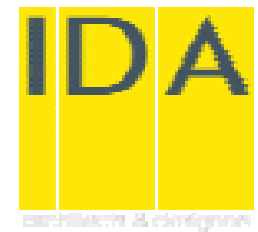
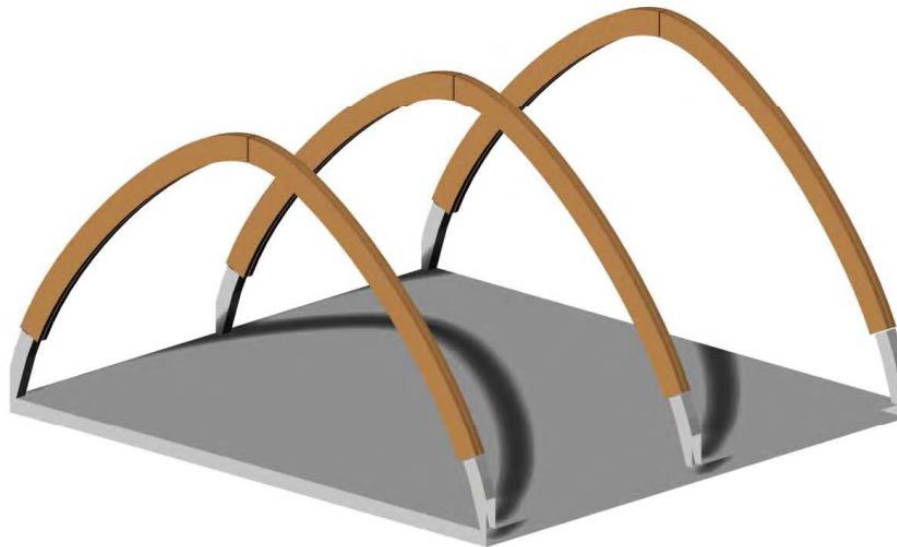
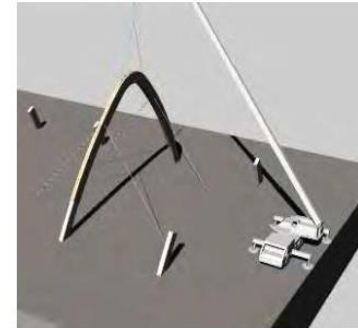
P H I L E X P O
W O O D 2 0 1 9

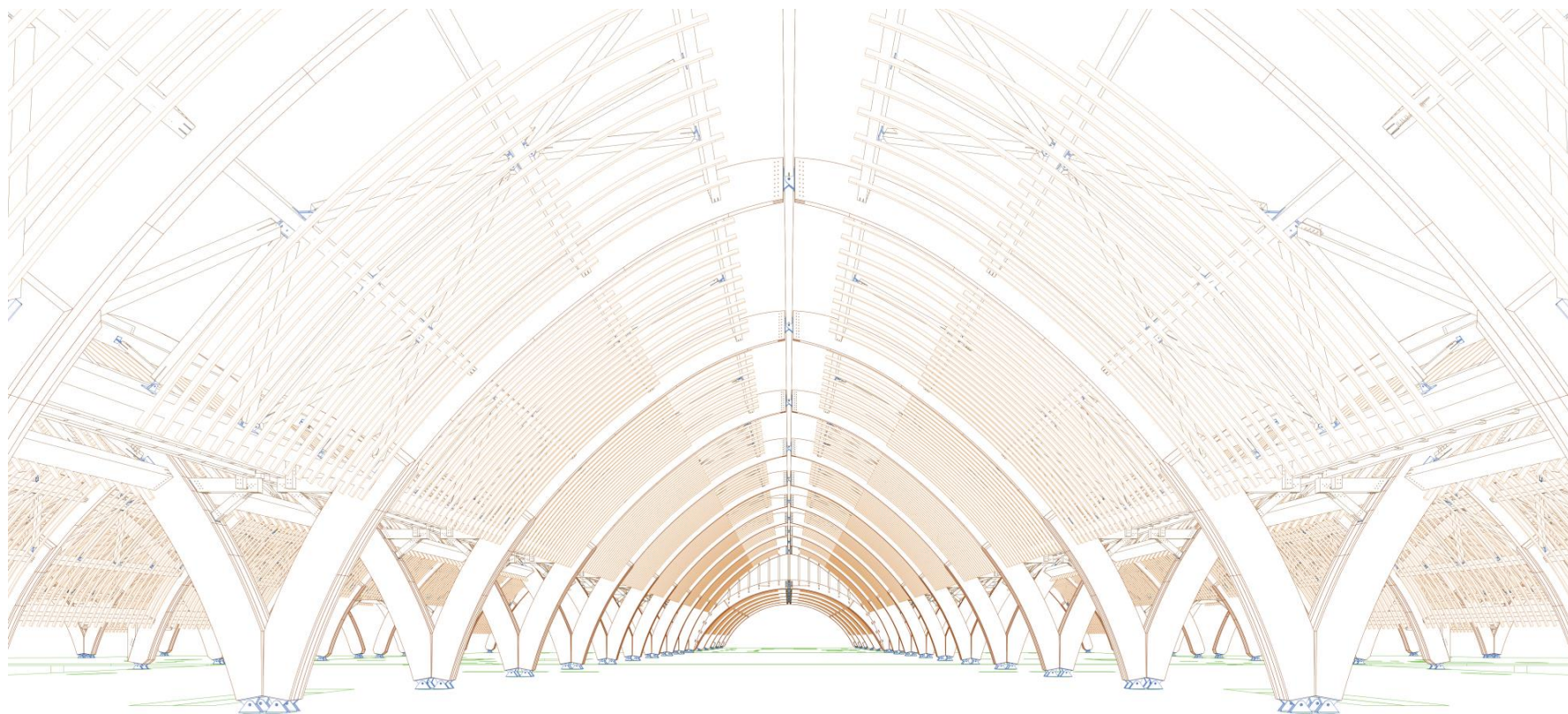
RUBNER
holzbau

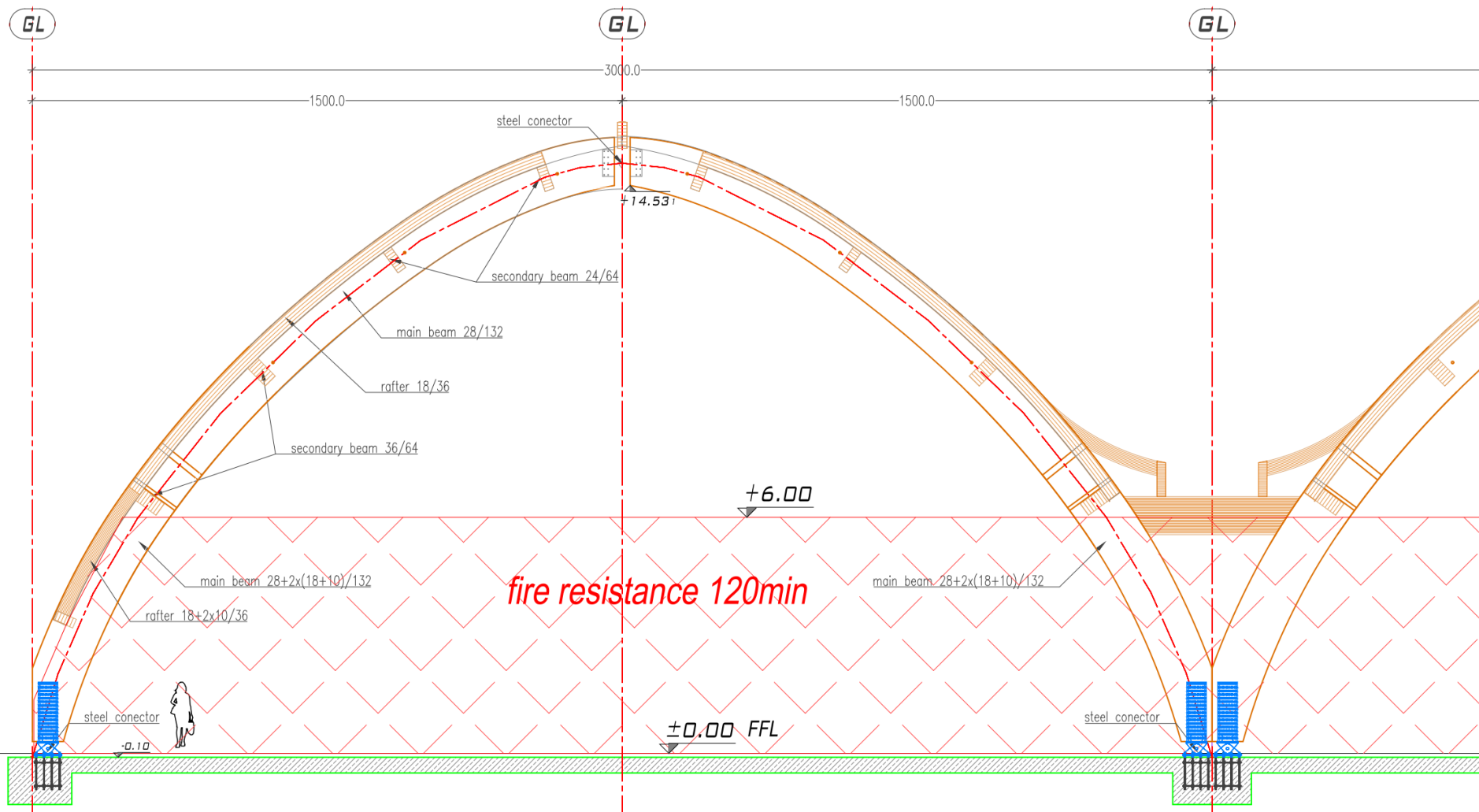


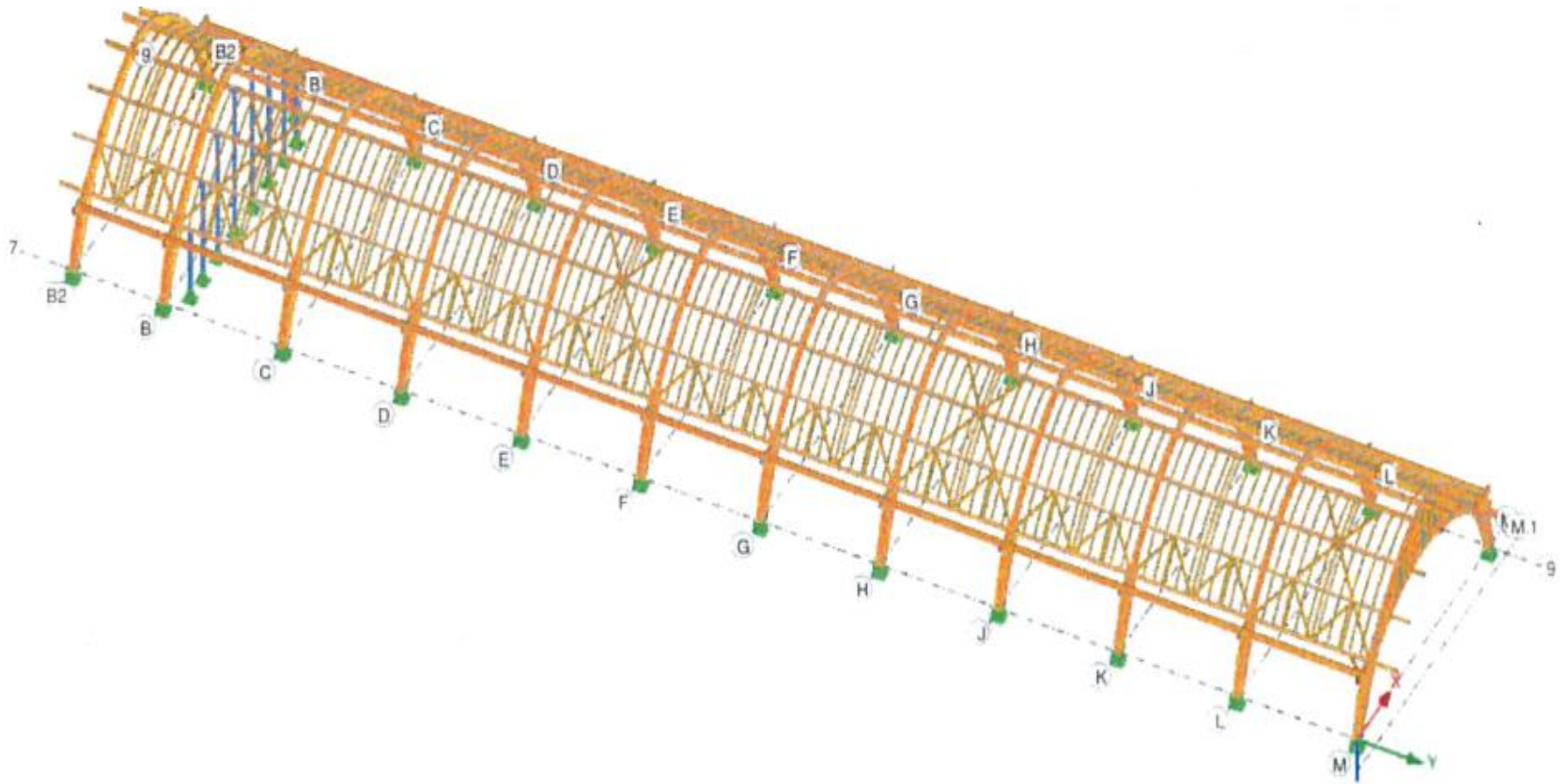
Installation Sequence

Glulam primary arches













PHILEXPO
WOOD 2019

RUBNER
holzbau







The Fabrication

P H I L E X P O
W O O D 2 0 1 9

RUBNER
holzbau



P H I L E X P O
W O O D 2 0 1 9

RUBNER
holzbau





P H I L E X P O
W O O D 2 0 1 9

RUBNER
holzbau











P H I L E X P O
W O O D 2 0 1 9

RUBNER
holzbau





The Shipment





P H I L E X P O
W O O D 2 0 1 9

RUBNER
holzbau







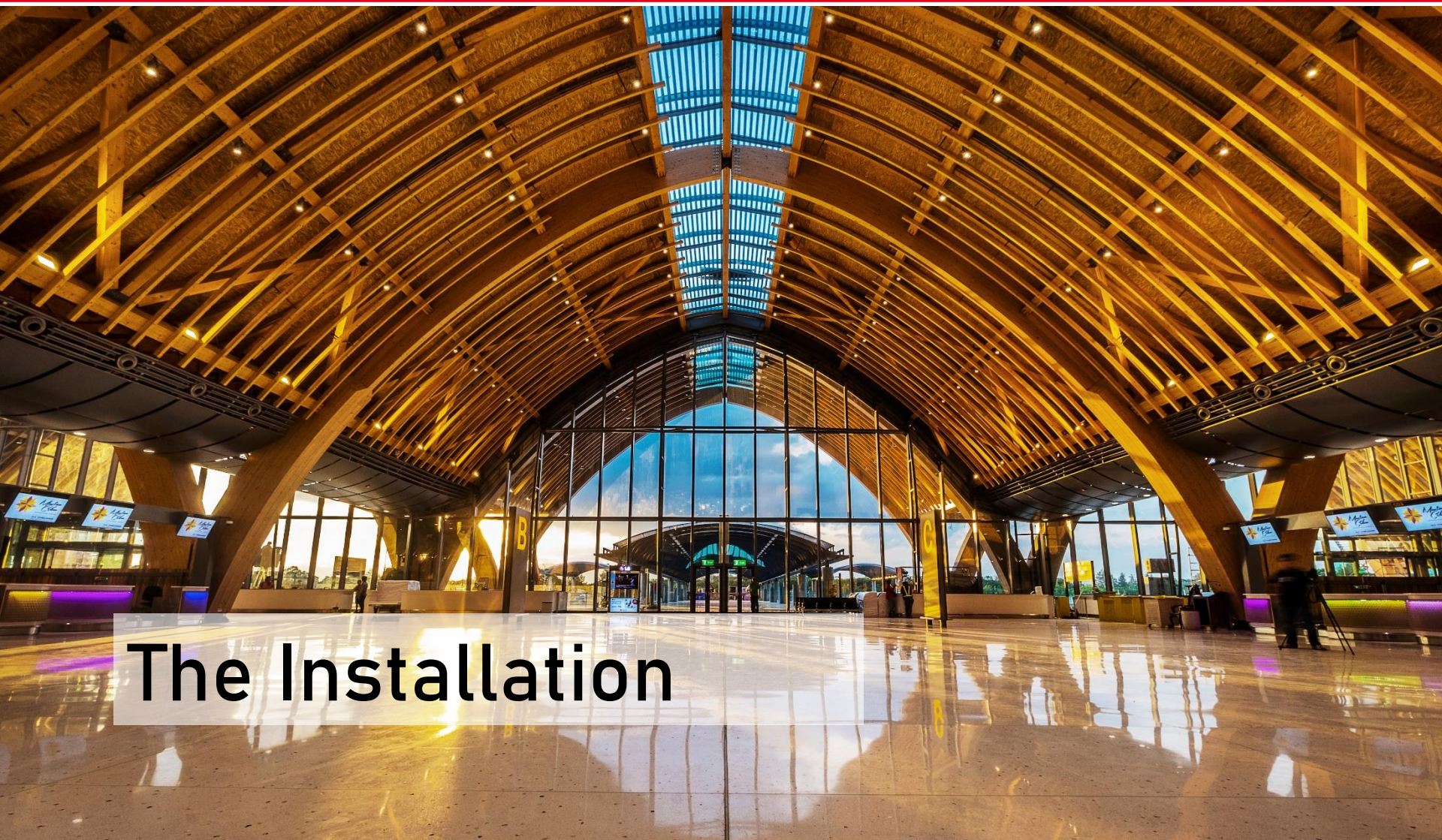












The Installation















P H I L E X P O
W O O D 2 0 1 9

RUBNER
holzbau



P H I L E X P O
W O O D 2 0 1 9

RUBNER
holzbau







P H I L E X P O
W O O D 2 0 1 9

RUBNER
holzbau





PHILEXPO
WOOD 2019

RUBNER
holzbau



PHILEXPO
WOOD 2019

RUBNER
holzbau



P H I L E X P O
W O O D 2 0 1 9

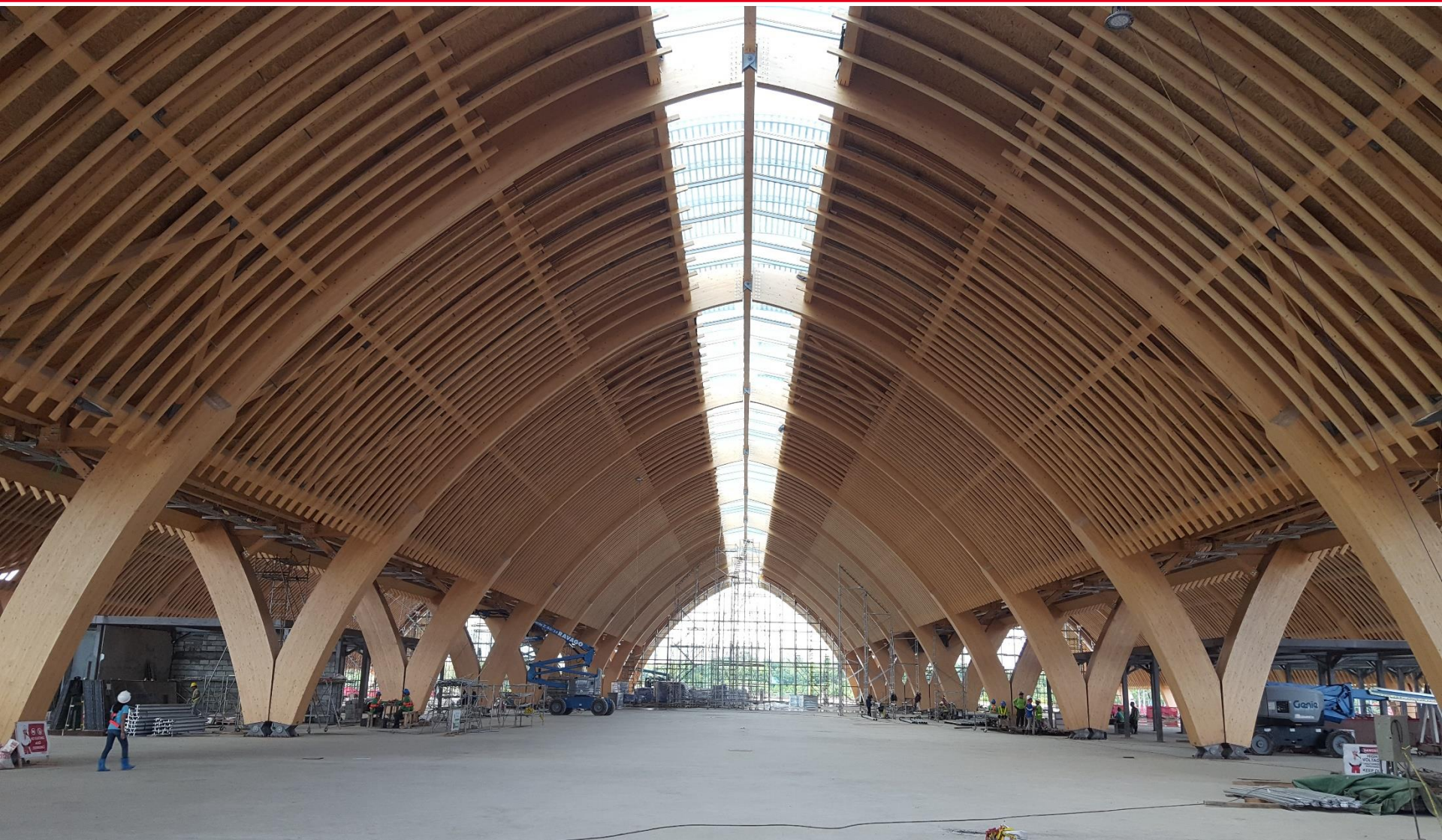
RUBNER
holzbau



www.holzbau.rubner.com

PHILEXPO
WOOD 2019

RUBNER
holzbau





Why to use timber ?

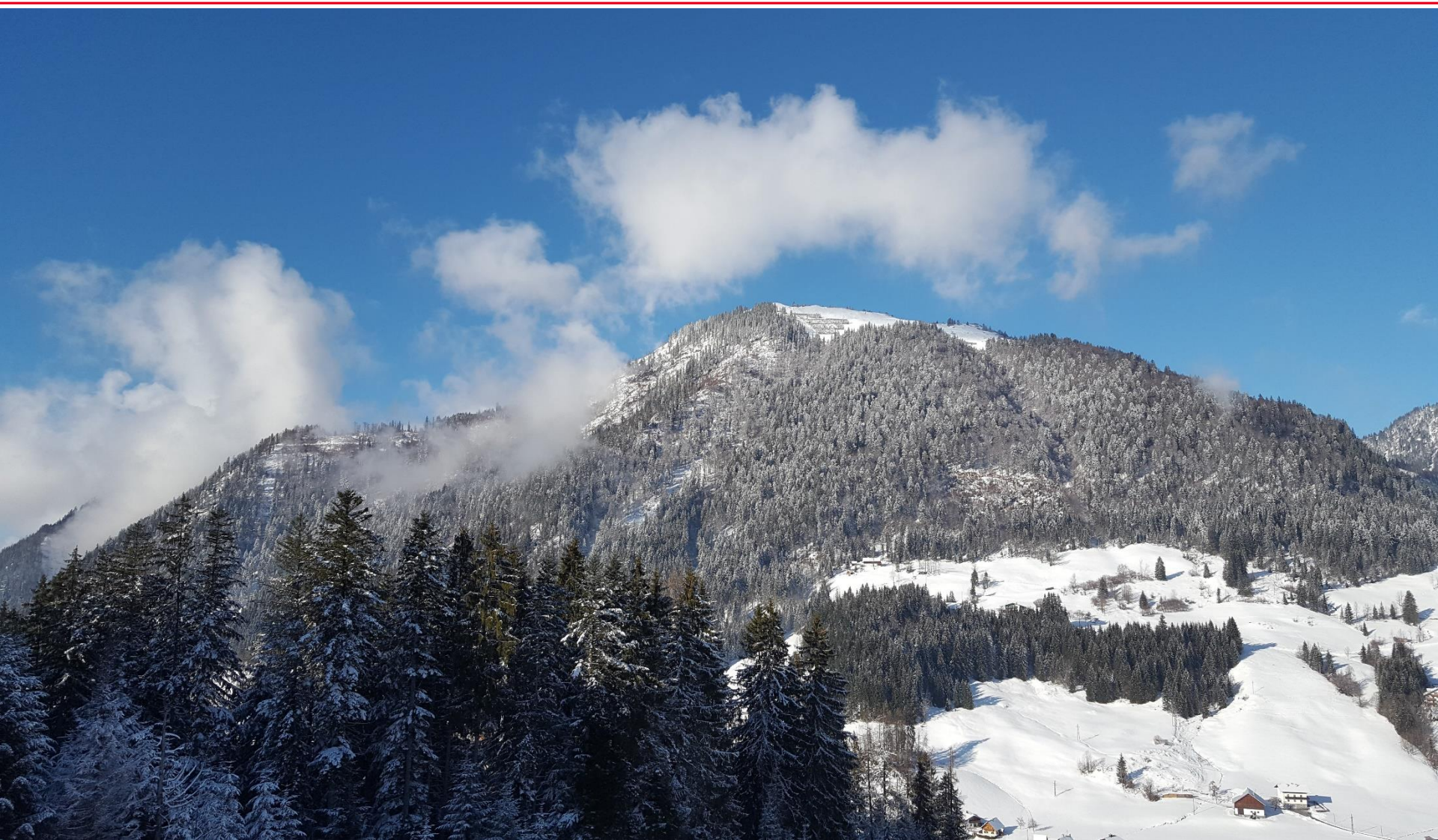
P H I L E X P O
W O O D 2 0 1 9

RUBNER
holzbau



P H I L E X P O
W O O D 2 0 1 9

RUBNER
holzbau



P H I L E X P O
W O O D 2 0 1 9

RUBNER
holzbau



P H I L E X P O
W O O D 2 0 1 9

RUBNER
holzbau



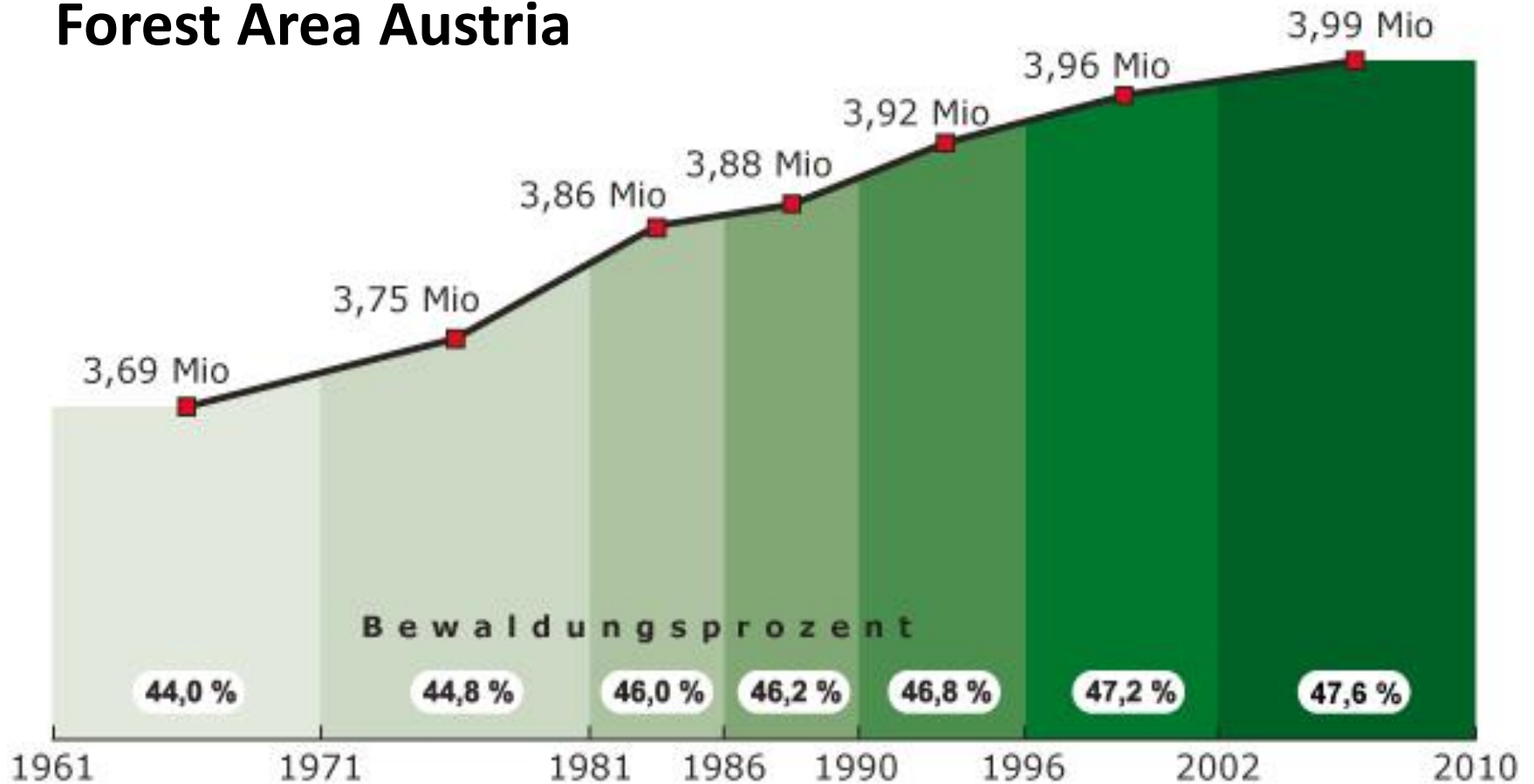
P H I L E X P O
W O O D 2 0 1 9

RUBNER
holzbau





Forest Area Austria



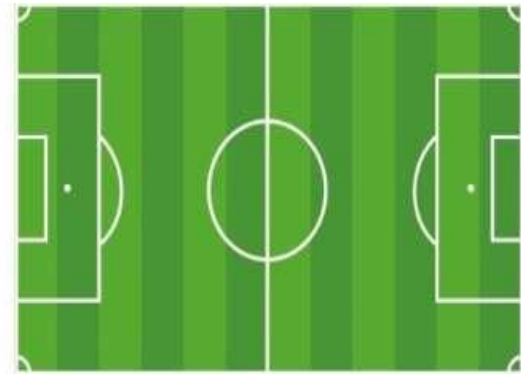
47,9 % Forest Area 2018





2008
3,99 Mio. ha
Forest Area

+ 30.000 ha =



42.000

Football Fields



2018
4,02 Mio. ha
Forest Area

Available timber in Austrian forests



2008

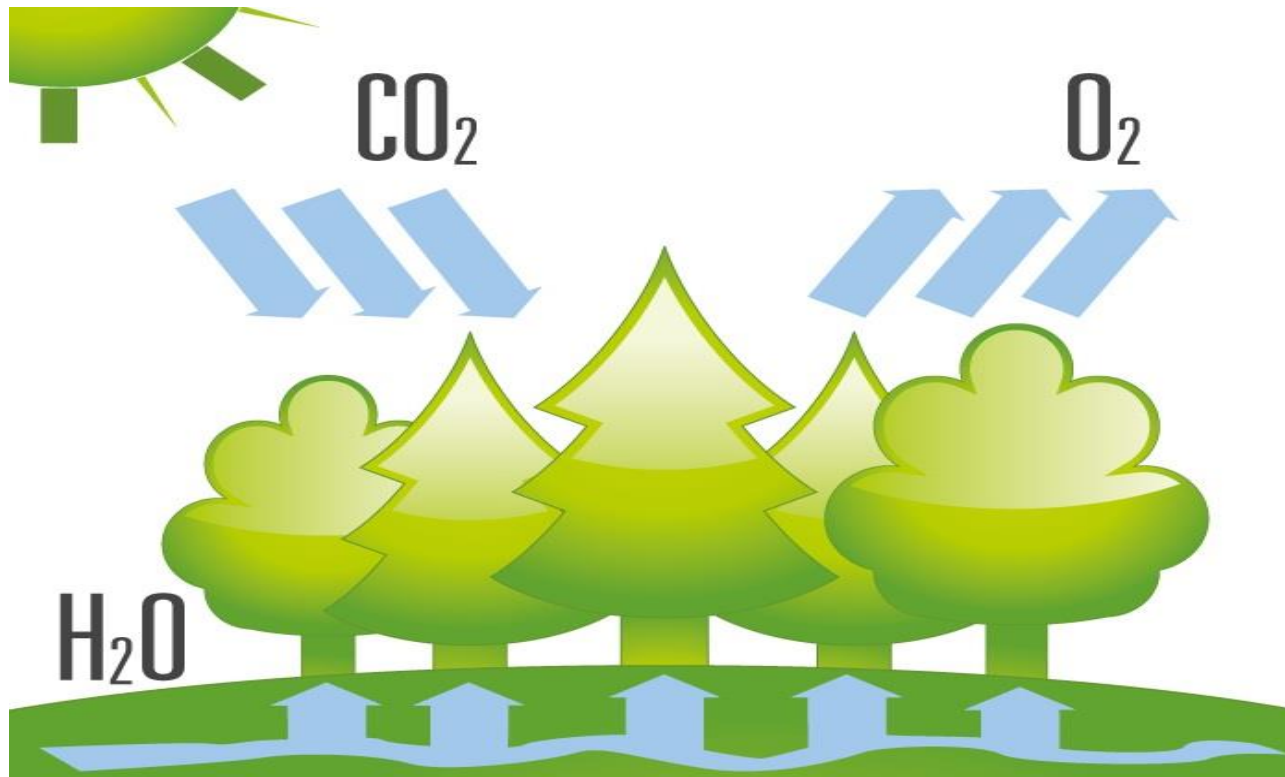
1,135 Mrd. m³



2018

1,173 Mrd. m³

WHY TO USE TIMBER AT ALL ?



WHY TO USE TIMBER AT ALL ?



1 m³ OF TIMBER CAN STORE 1 TON CO₂



The Completion







P H I L E X P O
W O O D 2 0 1 9

RUBNER
holzbau



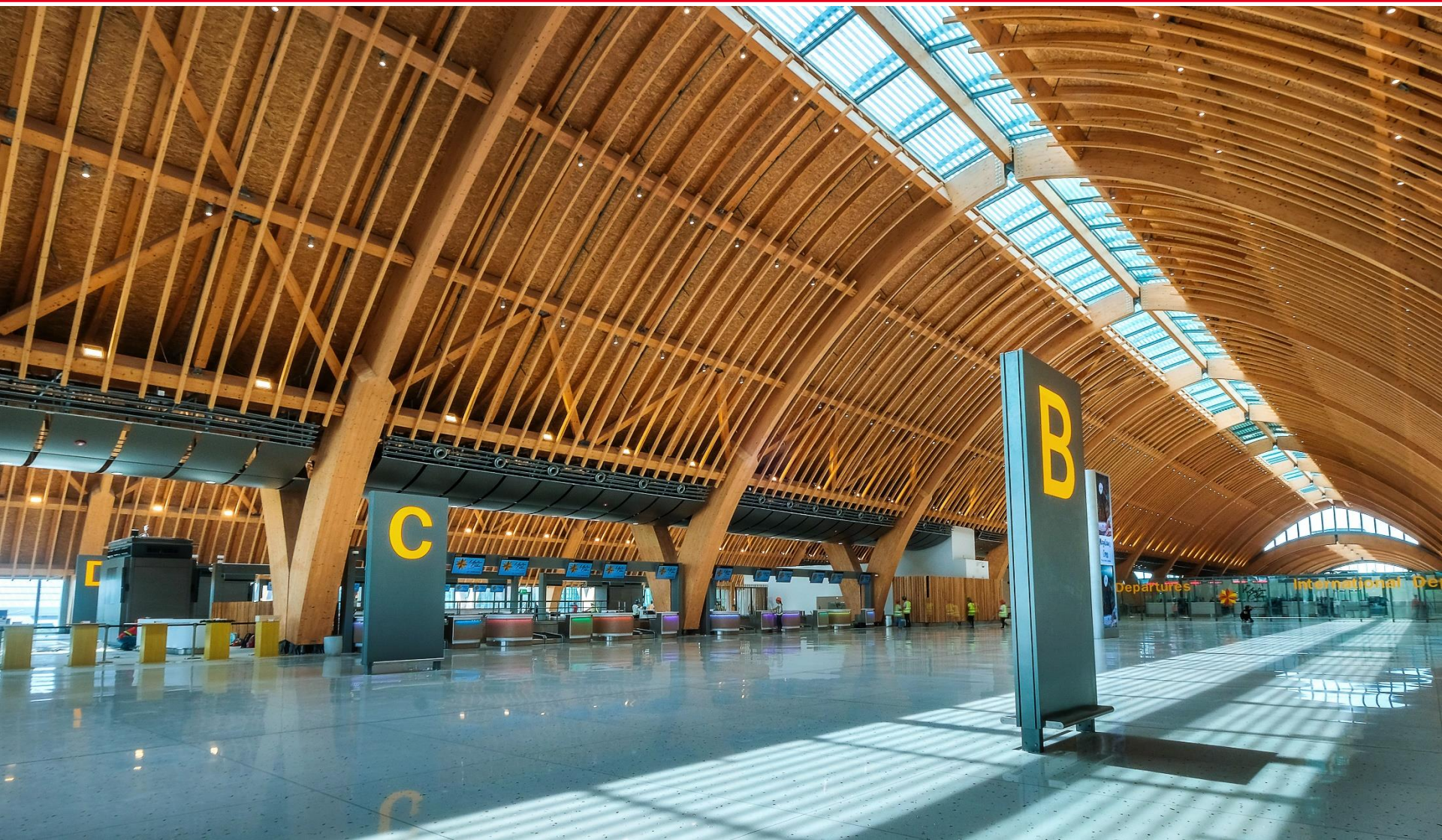






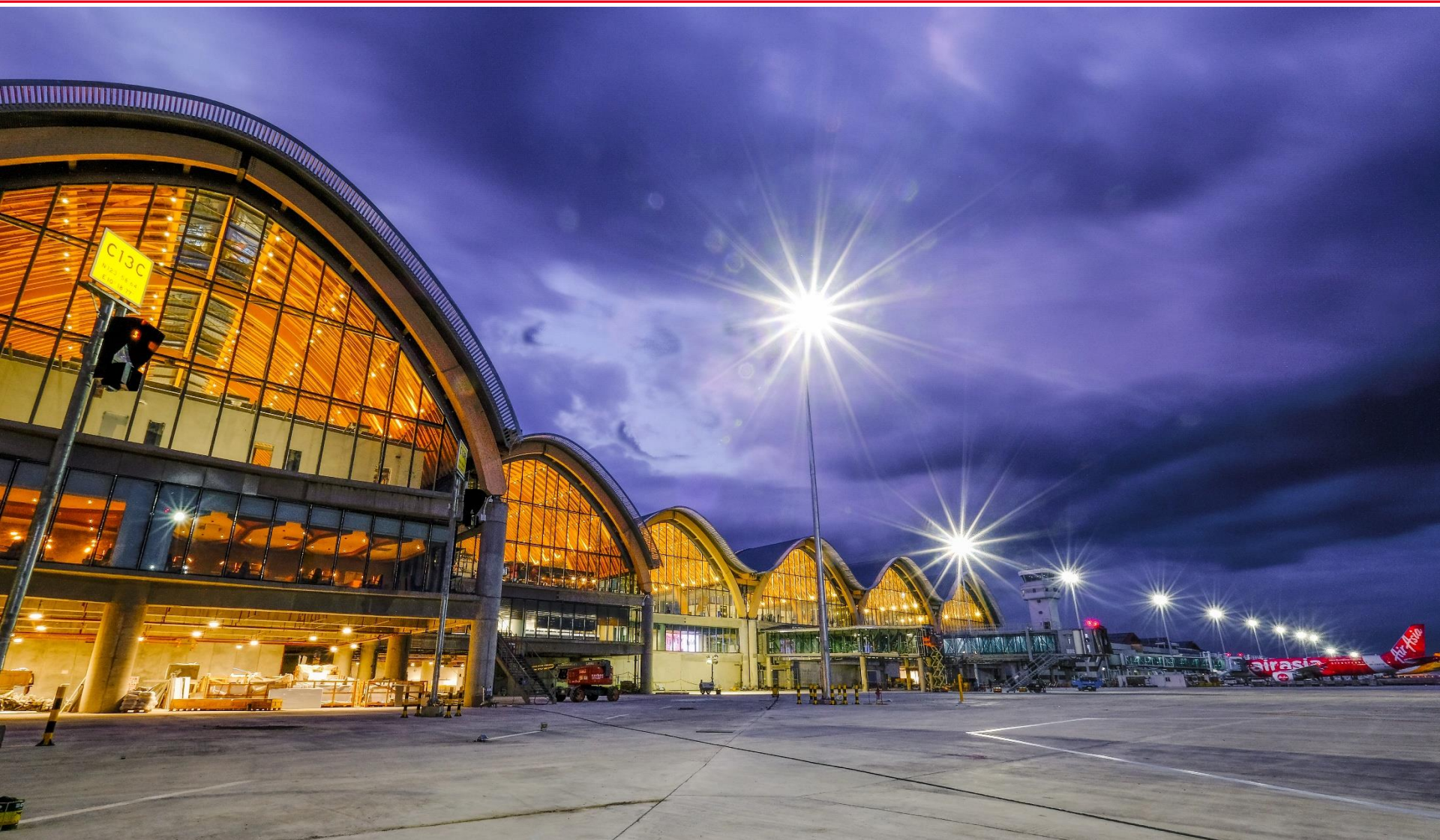
P H I L E X P O
W O O D 2 0 1 9

RUBNER
holzbau



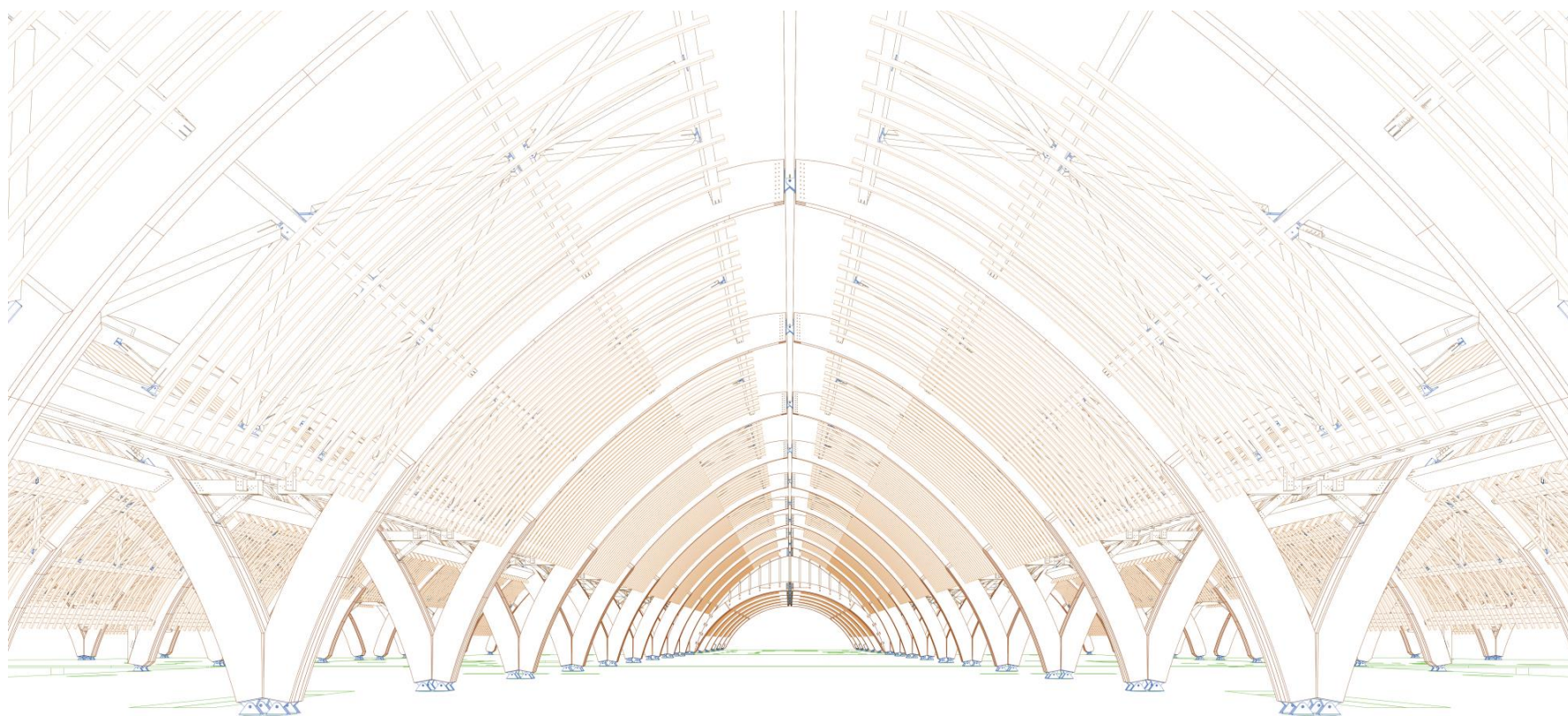
P H I L E X P O
W O O D 2 0 1 9

RUBNER
holzbau











Thank You